

Marooka Hiab Technical Specification

- 46tm Hiab
- 16.30mtr Main Boom
- 11.65mtr Hydraulic Jib Attachment
- Max Outreach 28.55mtr
- Low Ground Pressure
- High Performance Movement
- Excellent Traction



Depots at:

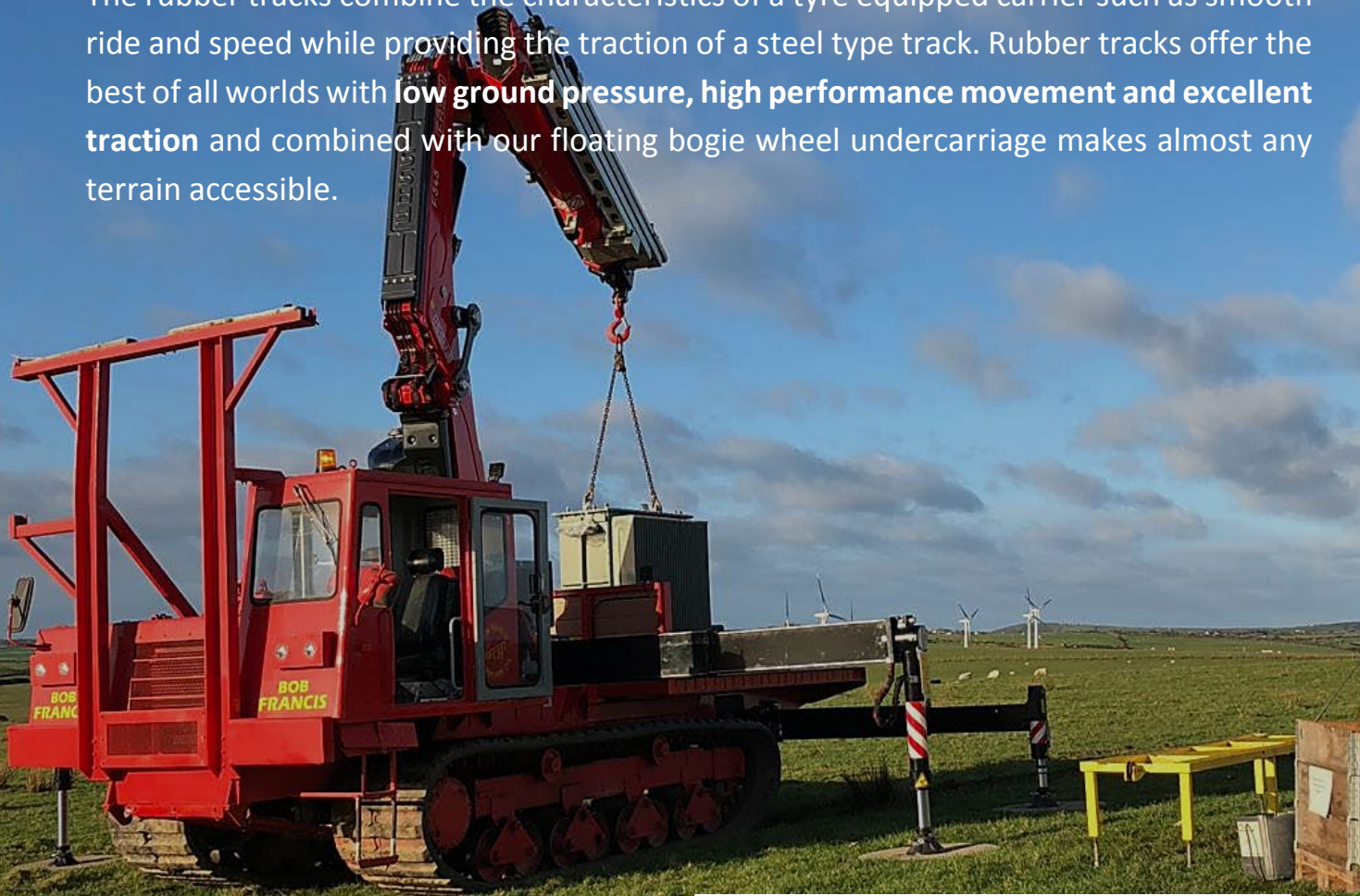
Chester	01244 288282
Rhyl	01745 591753
Anglesey	01248 421570
Shrewsbury	01743 469271

Marooka Hiab

A solution to your lifting problem

The Marooka is a high production, high performance construction tool built to do full duty cycle operations all day long, has a full hydrostatic operating system and specially developed rubber tracks.

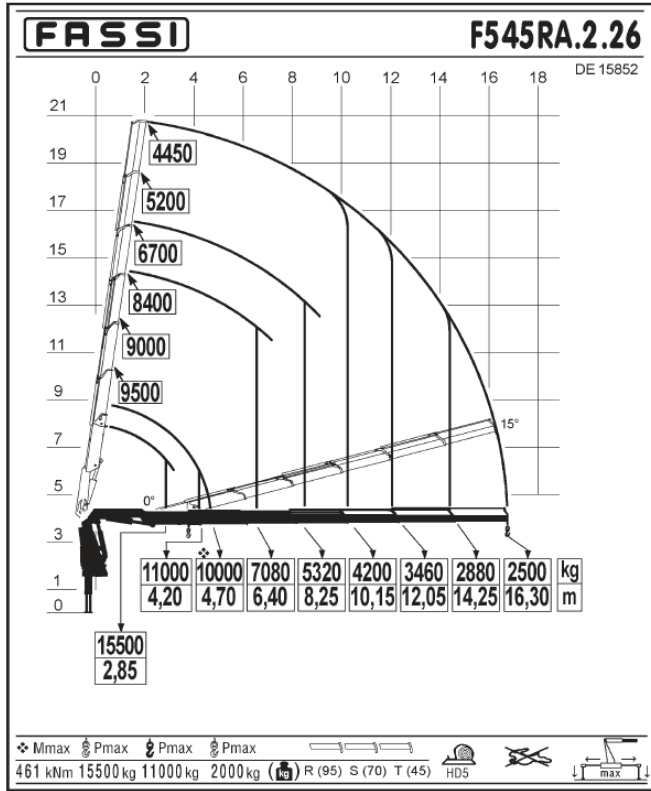
The rubber tracks combine the characteristics of a tyre equipped carrier such as smooth ride and speed while providing the traction of a steel type track. Rubber tracks offer the best of all worlds with **low ground pressure, high performance movement and excellent traction** and combined with our floating bogie wheel undercarriage makes almost any terrain accessible.



Marooka Carrier Specification	
Length	7400mm
Width	2800mm
Height	4000mm
Gross Unladen Weight	19,000kgs
Maximum Payload	8,000kgs
Track Ground Pressure	0.22kgs/m ²

FASSI**F545RA.2.26 xe-dynamic - Load Diagram**Via Roma, 110
14021 Albino (BG)
Tel.: +39 035 776400
Fax: +39 035 755020
www.fassi.com
fassi@fassi.com

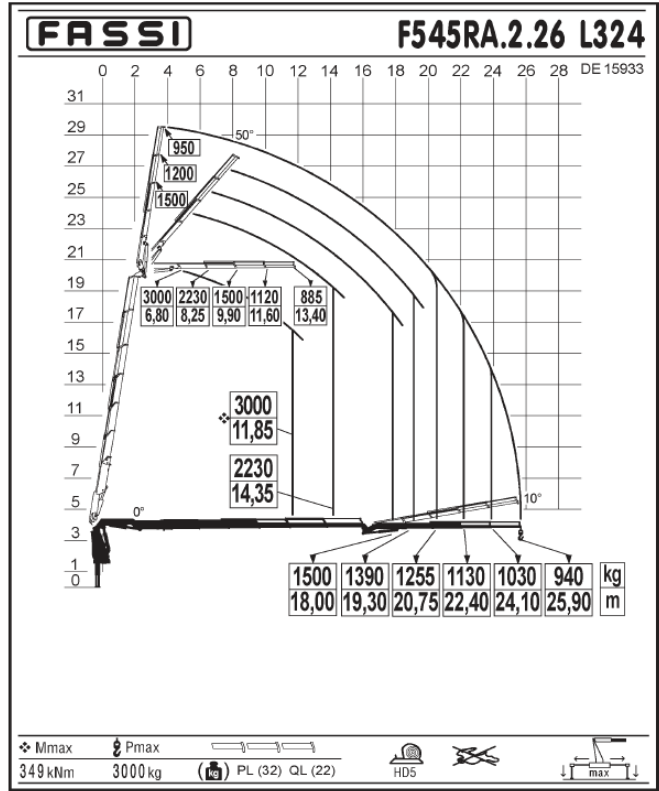
LOAD DIAGRAM WITH LIFTING MOMENT LIMITING DEVICE



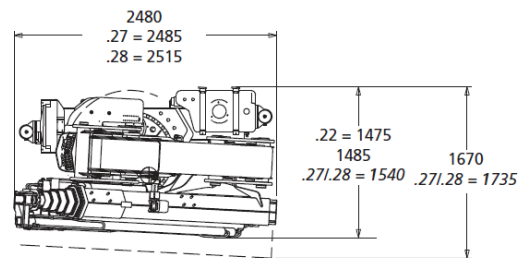
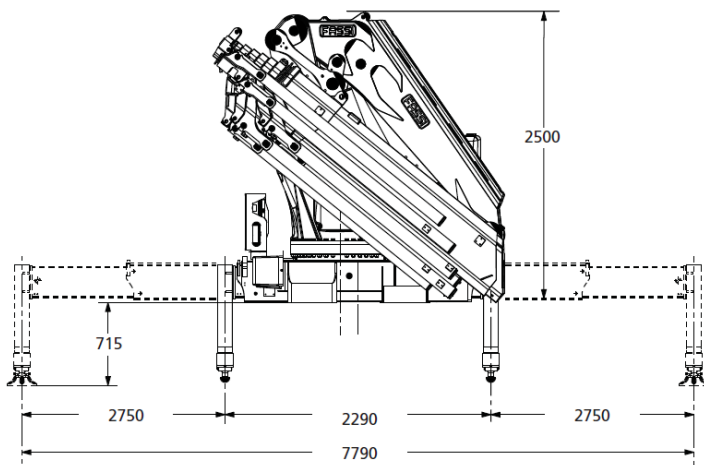
Basic Boom Duty Chart

FASSI**F545RA.2.26/L324 xe-dynamic - Load Diagram**Via Roma, 110
14021 Albino (BG)
Tel.: +39 035 776400
Fax: +39 035 755020
www.fassi.com
fassi@fassi.com

LOAD DIAGRAM HYDRAULIC EXTENSIONS WITH LIFTING MOMENT LIMITING DEVICE



Jib Attachment Duty Chart



Hiab Crane Stabiliser spread = 7790mm
 Rear Supporting Stabiliser spread = 6900mm